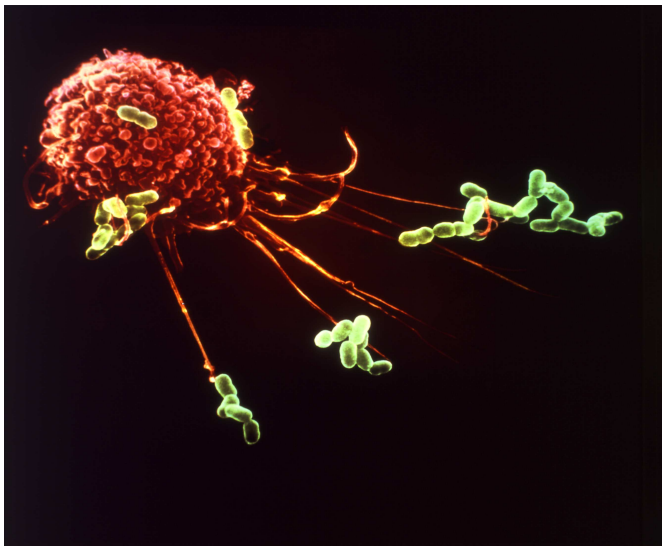


Münster Conference on Single Cell Analysis

Progress in Research and Technology

Münster, November 16, 2004
Schloss Wilkinghege



The challenge of Integrated Functional Genomics is to understand the functions of a cell. Due to the limitation of current technologies our knowledge on cellular functions is predominantly gained from the analysis of heterogeneous cell populations. In order to understand the processes within a living cell data from single cells need to be generated which provide the basis for complex systems analyses. The conference gathers scientists from the various fields of single cell analysis. The aim is to define the scope and limitations of existing technologies and define future requirements in the development of methods and technologies.

Topics

Expression Analysis

- RNA-Isolation
- Single Cell PCR

Proteomics

- Preparation of Cells
- Protein Microarrays
- Analysis of Single Cell Proteome

Single Cell Technologies

- Isolation and Manipulation
- Imaging (e.g. AFM, Interference Microscopy)

Registration

Registration fee

€ 70.00 (Deadline October 22, 2004)

Please register online under

<http://ifg-izkf.uni-muenster.de/News/singlecell>

Conference Office: IFG Scientific Office, von Esmerch-Str. 56, 48149 Münster,
Phone: +49(251)8352949, Fax: +49(251)8355651, e-mail: info@ifg.uni-muenster.de;
<http://ifg-izkf.uni-muenster.de>

Conference Site: Schloss Wilkinghege, Steinfurter Str. 374, 48159 Münster,
Phone: +49(251)14427-0; www.Schloss-Wilkinghege.de