



E-CUBE

All-in-one Gel-Electrophoresis System

Completely Stand-Alone
DNA/RNA Analysis with Live Imaging

E-CUBE – Compact, Safe, Fast

Stand-Alone Gel-Electrophoresis System

THE STAND-ALONE UNIT FOR BOTH MOLECULAR ROUTINE DIAGNOSTIC & RESEARCH

SYSTEM COMPONENTS

Integrated Micro Computer & Digital Camera

- computer with software for system control, data storage and wireless data transfer (Wi-Fi)
- integrated digital colour camera for gel documentation
- intuitive handling by smart interface design

Live Observation & Documentation of DNA/RNA

- excitation with visible light, using a non-toxic fluorescent dye, which gives a higher sensitivity than the toxic ethidium bromide
- highest sensitivity detection (below 2 ng/ fragment)
- direct sample staining
- no pre- or post-run gel staining necessary

Electrophoresis Unit

- runs with quality-checked precasted gels, cost and time-effective
- easily removable electrophoresis chamber
- external power supply 24 V

BLUE LED Illumination

- no UV-light emission to the laboratory staff
- illumination by visible blue LED light
- homogeneous illumination provides for accurate semi quantification of separated samples
- high life span of the light source (LED panel >50,000 hours)

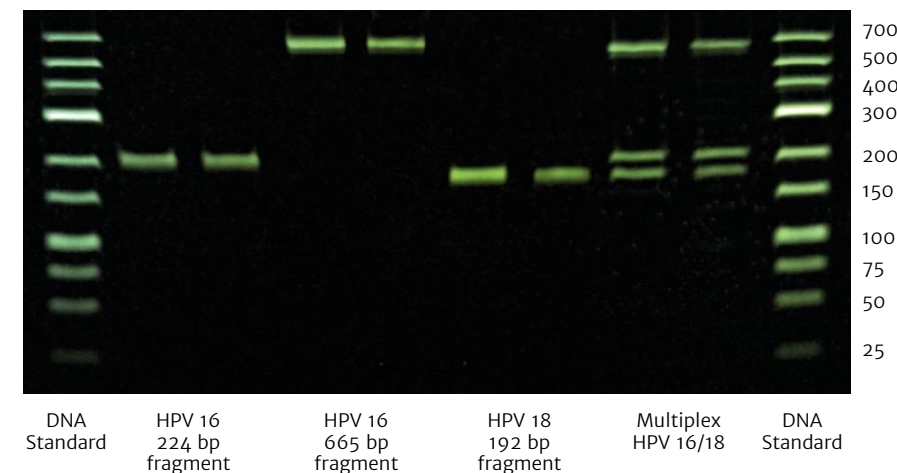


LIVE IMAGING + DOCUMENTATION + ANALYSIS

HIGHLIGHTS OF THE E-CUBE

- all-in-one DNA/RNA electrophoresis device including gel electrophoresis chamber, LED illumination, live display, documentation by integrated digital camera and software for image capture
- integrated computer system
- easy benchtop operation by daylight: no darkroom required
- availability of dedicated non-toxic high sensitivity stain
- quick and easy data transfer by USB port or Wi-Fi
- extremely robust and cost-effective
- necessary lab space (foot print) only 0.2m²

HPV differentiation



TECHNICAL SPECIFICATIONS

Height: 187 mm (250 mm with E-CAM)
Width: 150 mm
Length: 192 mm
Weight: 3500 g

Power supply: 220 V AC => 24 V DC
Light source: High Power LED Panel,
Blue, $\lambda = 470$ nm



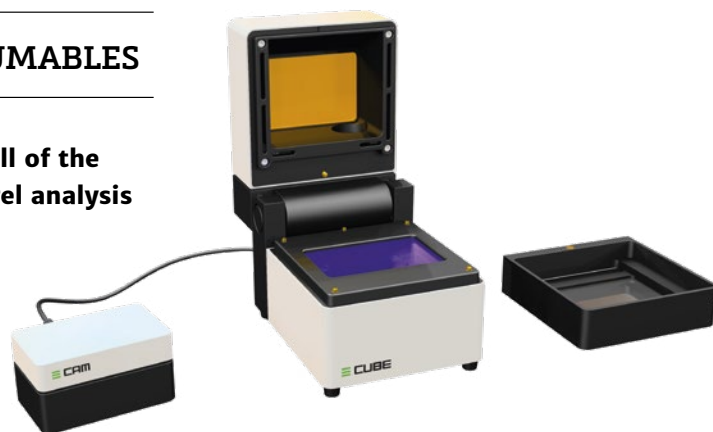
The Fusion: 5 Components = 1 System

The E-CUBE Product Portfolio: A Perfect Team

ALL-IN-ONE SYSTEM PLUS DEDICATED CONSUMABLES

The new E-CUBE Gel-Electrophoresis System combines all of the components necessary for qualitative and quantitative gel analysis of DNA/RNA:

Integrated micro computer with operation system and imaging software, power supply, electrophoresis chamber, LED illumination unit and high resolution digital camera. A special feature of this all-in-one and stand-alone system is the live observation of the electrophoresis process. The gel run can be examined by daylight directly through the orange band pass filter or in the E-CUBE control centre on your personal computer, tablet PC or smartphone. A darkroom is not required.



The E-CUBE allows the perfect separation of nucleic acid fragments and shows a unique sensitivity for DNA detection down to below 2 ng/fragment. This is realized by staining the sample with the specially developed fluorochrome mix CUBE-GREEN and the use of the thin 3% agarose gel. The Cytecs "E-CUBE Gel Electrophoresis Kit" contains quality-checked, durable and ready-to-use gels, also including ready prepared buffers for sample preparation and the electrophoresis analysis.

Homogeneous illumination of the gel via the LED light panel allows the precise visualization of DNA/RNA sequences and semi quantification of DNA/RNA by comparison to control bands.

Cytecs offers customized development of PCR kits for various applications.



Cytecs GmbH
Im Derdel 8
D-48161 Münster

Fon: +49 2534 97736-0
Fax: +49 2534 97736-29
E-Mail: info@cytecs.com
www.cytecs.com